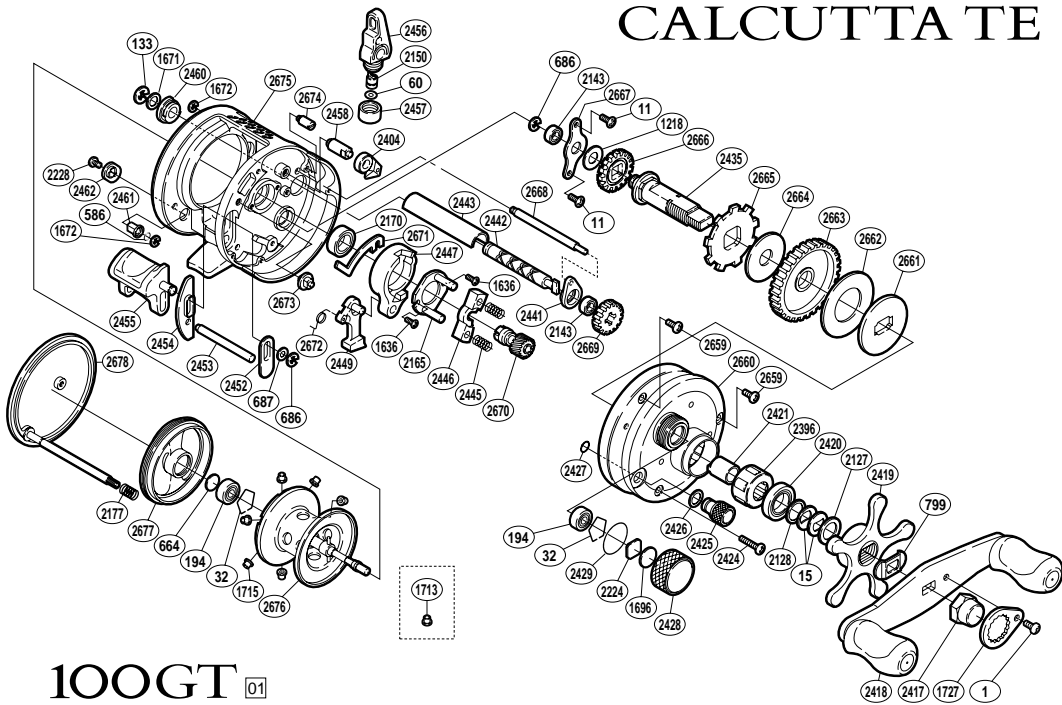


# CALCUTTA TE



100GT 01

BNT No.	PARTS NAMES	BNT No.	PARTS NAMES	BNT No.	PARTS NAMES
0001	Handle Nut Plate Screw	2228	Damper Guide Screw	2457	Pawl Cap
0011	Drive Shaft Retainer Screw	2396	Roller Clutch Bearing	2458	Anti-Reverse Pawl Pin
0015	Drag Spring Washer	2404	Anti-Reverse Pawl	2460	Worm Bushing (B)
0032	Bearing Retainer	2417	Handle Nut	2461	Damper (A)
0060	Spacer (optional)	2418	Handle Assembly	2462	Damper Guide
0133	Worm Shaft Retainer	2419	Star Drag	2659	Right Side Plate Screw (short)
0194	Ball Bearing	2420	Star Drag Bearing	2660	Right Side Plate
0586	Bolt Retainer	2421	Roller Clutch Inner Tube	2661	Key Washer
0664	Spacer (B)	2424	Right Side Plate Screw (long)	2662	Drag Washer (C)
0686	"E" Lock	2425	Side Plate Open Nut	2663	Drive Gear
0687	Spacer	2426	Open Nut Washer	2664	Drag Washer (A)
0799	Friction Washer	2427	"O" Ring	2665	Anti-Reverse Ratchet
1218	Idle Gear (A) Spacer	2428	Cast Control Cap	2666	Idle Gear (A)
1636	Clutch Cam Screw	2429	"O" Ring	2667	Drive Shaft Retainer
1671	Worm Shaft Washer (B)	2435	Drive Shaft	2668	Level Wind Guide
1672	"E" Lock	2441	Worm Bushing (A)	2669	Idle Gear (C)
1696	Cast Control Spacer (B)	2442	Worm Shaft	2670	Pinion Gear
1715	Brake Collar (red)	2443	Level Wind Guard	2671	Clutch Plate
1727	Handle Nut Plate	2445	Yoke Spring	2672	Clutch Pawl Spring
2127	Star Drag Spacer	2446	Yoke	2673	Set Pin
2128	Bearing Washer	2447	Clutch Cam	2674	Pawl Stop
2143	Ball Bearing	2449	Clutch Pawl	2675	One-Piece Frame
2150	Line Guide Pawl	2452	Clutch Bar Guide (A)	2676	Spool Assembly
2165	Clutch Cam Retainer	2453	Clutch Bar Support	2677	Brake Case
2170	Ball Bearing	2454	Clutch Bar Guide (B)	2678	Left Side Plate
2177	Left Side Plate Spring	2455	Quick-Fire II Clutch Bar		
2224	Spool Tension Spacer (A)	2456	Line Guide	1713	Brake Collar (green)