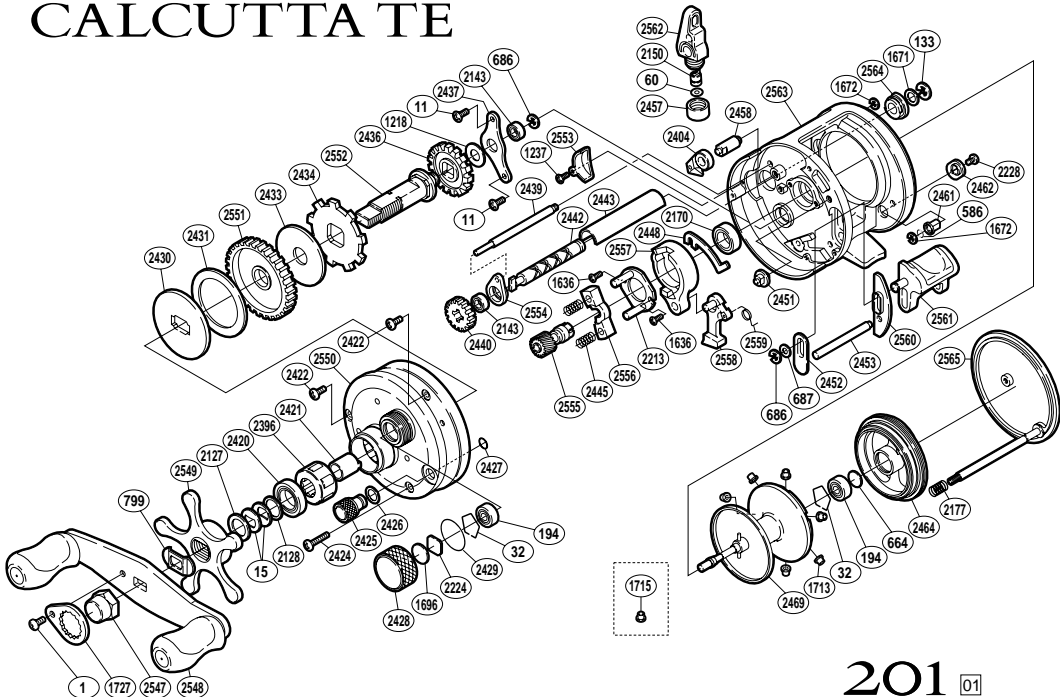


CALCUTTA TE



201 01

BNT No.	PARTS NAMES	BNT No.	PARTS NAMES	BNT No.	PARTS NAMES
0001	Handle Nut Plate Screw	2228	Damper Guide Screw	2458	Anti-Reverse Pawl Pin
0011	Drive Shaft Retainer Screw	2396	Roller Clutch Bearing	2461	Damper (A)
0015	Drag Spring Washer	2404	Anti-Reverse Pawl	2462	Damper Guide
0032	Bearing Retainer	2420	Star Drag Bearing	2464	Brake Case
0060	Spacer (optional)	2421	Roller Clutch Inner Tube	2469	Spool Assembly
0133	Worm Shaft Retainer	2422	Left Side Plate Screw (short)	2547	Handle Nut
0194	Ball Bearing	2424	Left Side Plate Screw (long)	2548	Handle Assembly
0586	Bolt Retainer	2425	Side Plate Open Nut	2549	Star Drag
0664	Spacer (B)	2426	Open Nut Washer	2550	Left Side Plate
0686	"E" Lock	2427	"O" Ring	2551	Drive Gear
0687	Spacer	2428	Cast Control Cap	2552	Drive Shaft
0799	Friction Washer	2429	"O" Ring	2553	Frame Shield
1218	Idle Gear (A) Spacer	2430	Key Washer	2554	Worm Bushing (A)
1237	Shield Screw	2431	Drag Washer (C)	2555	Pinion Gear
1636	Clutch Cam Screw	2433	Drag Washer (A)	2556	Yoke
1671	Worm Shaft Washer (B)	2434	Anti-Reverse Ratchet	2557	Clutch Cam
1672	"E" Lock	2436	Idle Gear (A)	2558	Clutch Pawl
1696	Cast Control Spacer (B)	2437	Drive Shaft Retainer	2559	Clutch Pawl Spring
1713	Brake Collar (green)	2439	Level Wind Guide	2560	Clutch Bar Guide (B)
1727	Handle Nut Plate	2440	Idle Gear (C)	2561	Quick-Fire II Clutch Bar
2127	Star Drag Spacer	2442	Worm Shaft	2562	Line Guide
2128	Bearing Washer	2443	Level Wind Guard	2563	One-Piece Frame
2143	Ball Bearing	2445	Yoke Spring	2564	Worm Bushing (B)
2150	Line Guide Pawl	2448	Clutch Plate	2565	Right Side Plate
2170	Ball Bearing	2451	Set Pin		
2177	Right Side Plate Spring	2452	Clutch Bar Guide (A)		
2213	Clutch Cam Retainer	2453	Clutch Bar Support		
2224	Spool Tension Spacer (A)	2457	Pawl Cap	1715	Brake Collar (red)

(121023)