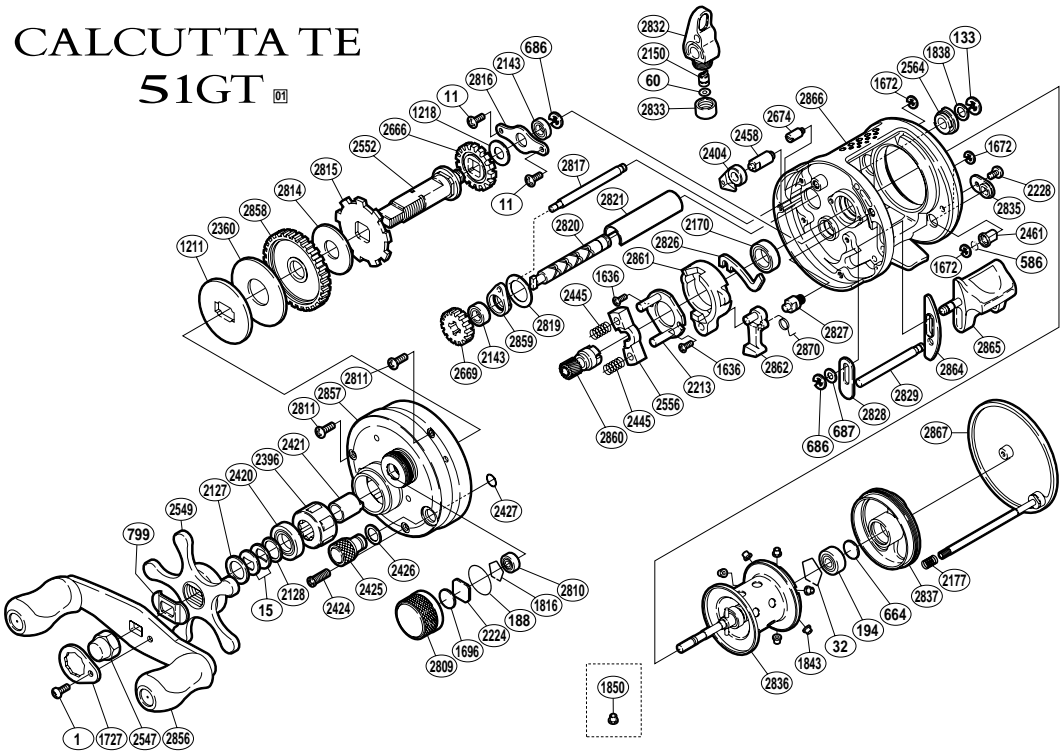


CALCUTTA TE

51GT ⁰¹



BNT No.	PARTS NAMES	BNT No.	PARTS NAMES	BNT No.	PARTS NAMES
0001	Handle Nut Plate Screw	2213	Clutch Cam Retainer	2816	Drive Shaft Retainer
0011	Drive Shaft Retainer Screw	2224	Spool Tension Spacer (A)	2817	Level Wind Guide
0015	Drag Spring Washer	2228	Damper Guide Screw	2819	Worm Spacer
0032	Bearing Retainer (B)	2360	Drag Washer (C)	2820	Worm Shaft
0060	Spacer	2396	Roller Clutch Bearing	2821	Level Wind Guard
0133	Worm Shaft Retainer	2404	Anti-Reverse Pawl	2826	Clutch Plate
0188	"O" Ring	2420	Star Drag Bearing	2827	Set Pin
0194	Ball Bearing	2421	Roller Clutch Inner Tube	2828	Clutch Bar Guide (A)
0586	Bolt Retainer	2424	Left Side Plate Screw (long)	2829	Clutch Bar Support
0664	Spacer (B)	2425	Side Plate Open Nut	2832	Line Guide
0686	"E" Lock	2426	Open Nut Washer	2833	Pawl Cap
0687	Spacer	2427	"O" Ring	2835	Damper Guide
0799	Friction Washer	2445	Yoke Spring	2836	Spool Assembly
1211	Key Washer	2458	Anti-Reverse Pawl Pin	2837	Brake Case
1218	Idle Gear (A) Spacer	2461	Damper (A)	2856	Handle Assembly
1636	Clutch Cam Screw	2547	Handle Nut	2857	Left Side Plate
1672	"E" Lock	2549	Star Drag	2858	Drive Gear
1696	Cast Control Spacer (B)	2552	Drive Shaft	2859	Worm Bushing (A)
1727	Handle Nut Plate	2556	Yoke	2860	Pinion Gear (A)
1816	Bearing Retainer (A)	2564	Worm Bushing (B)	2861	Clutch Cam
1838	Worm Shaft Washer (B)	2666	Idle Gear (A)	2862	Clutch Pawl
1843	Brake Collar (blue)	2669	Idle Gear (C)	2864	Clutch Bar Guide (B)
2127	Star Drag Spacer	2674	Pawl Stop	2865	Quick-Fire II Clutch Bar
2128	Bearing Washer	2809	Cast Control Cap	2866	One-Piece Frame
2143	Ball Bearing	2810	Ball Bearing	2867	Right Side Plate
2150	Line Guide Pawl	2811	Left Side Plate Screw (short)	2870	Clutch Pawl Spring
2170	Ball Bearing	2814	Drag Washer (A)		
2177	Right Side Plate Spring	2815	Anti-Reverse Ratchet	1850	Brake Collar (Yellow)