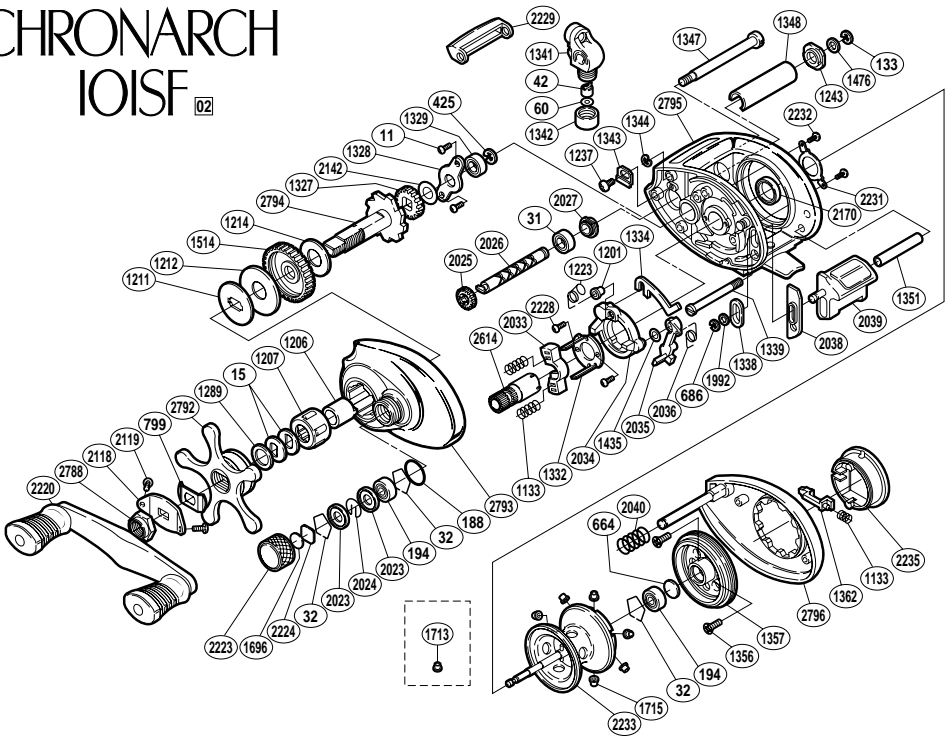


CHRONARCH IOISF 02



BNT No.	PARTS NAMES	BNT No.	PARTS NAMES	BNT No.	PARTS NAMES
0011	Drive Shaft Retainer Screw	1332	Clutch Cam Retainer	2035	Clutch Pawl
0015	Drag Spring Washer	1334	Clutch Plate	2036	Clutch Pawl Spring
0031	Ball Bearing	1338	Clutch Bar Guide (A)	2038	Clutch Bar Guide (B)
0032	Bearing Retainer	1339	Clutch Bar Bolt	2039	Quick-Fire II Clutch Bar
0042	Line Guide Pawl	1341	Line Guide	2040	Right Side Plate Spring
0060	Spacer (optional)	1342	Pawl Cap	2118	Handle Nut Plate
0133	Worm Shaft Retainer	1343	Worm Bearing (A) Retainer	2119	Nut Plate Screw
0188	"O" Ring	1344	"C" Lock	2142	Idle Gear (A) Spacer
0194	Ball Bearing	1347	Level Wind Guide	2170	Ball Bearing
0425	"E" Lock	1348	Level Wind Guard	2220	Handle Assembly
0664	Spacer (B)	1351	Clutch Bar Support	2223	Cast Control Cap
0686	"E" Lock	1356	Brake Case Retainer Screw	2224	Spool Tension Spacer (A)
0799	Friction Washer	1357	Brake Case	2228	Clutch Cam Screw
1133	Yoke / Turnkey Pawl Spring	1362	Turnkey Pawl	2229	Level Wind Protector
1201	Retractor Spring Collar	1435	Clutch Pawl Spacer	2231	Bearing Retainer
1206	Roller Clutch Inner Tube	1476	Worm Shaft Spacer	2232	Bearing Retainer Screw
1207	Roller Clutch Bearing	1514	Drive Gear	2233	Spool Assembly
1211	Key Washer	1696	Cast Control Spacer (B)	2235	Turnkey Dial
1212	Drag Washer (C)	1715	Brake Collar (red)	2614	Pinion Gear
1214	Drag Washer (A)	1992	Spacer (B)	2788	Handle Nut
1223	Retractor Spring	2023	Spool Shaft Clip Holder	2792	Star Drag
1237	Worm Bearing (A) Retainer Screw	2024	Spool Shaft Clip	2793	Left Side Plate
1243	Worm Bushing (B)	2025	Idle Gear (C)	2794	Drive Shaft
1289	Star Drag Spacer	2026	Worm Shaft	2795	One-Piece Frame
1327	Idle Gear	2027	Worm Bushing (A)	2796	Right Side Plate
1328	Drive Shaft Retainer	2033	Yoke		
1329	Ball Bearing	2034	Clutch Cam	1713	Brake Collar (green)