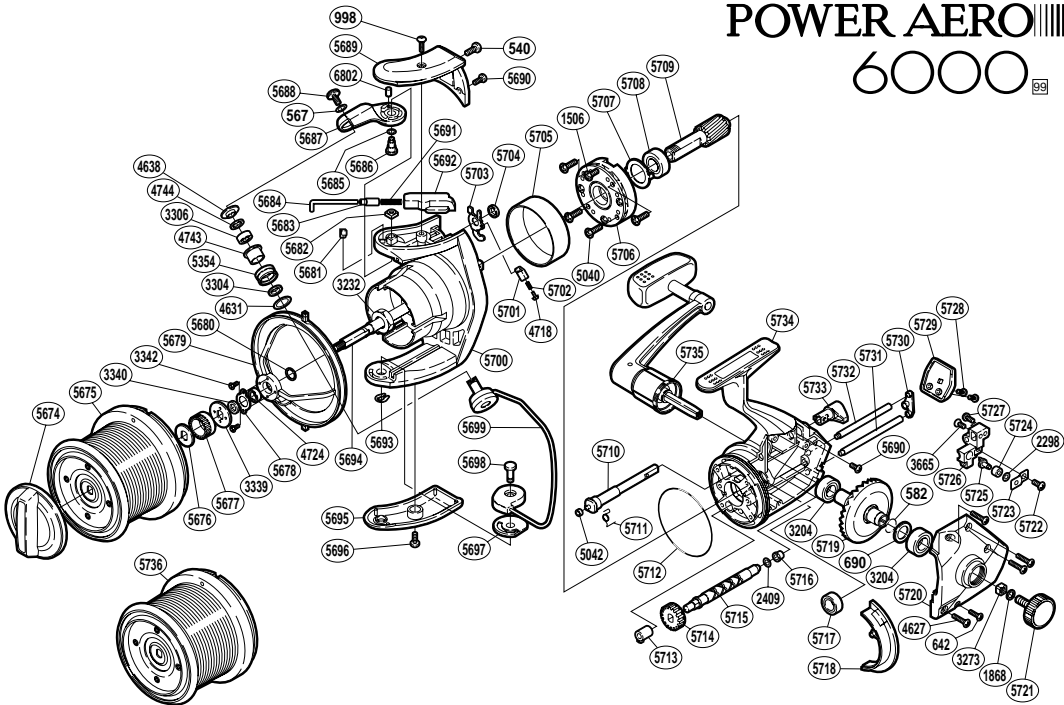


# POWER AERO

## 6000



RD No.	PARTS NAMES	RD No.	PARTS NAMES	RD No.	PARTS NAMES
0540	Bail Spring Cover Screw (medium)	5677	Spool Support (A)	5709	Pinion Gear
0567	Lock Washer	5678	Bearing Retainer	5710	Anti-Reverse Cam
0582	"O" Ring (small)	5679	Line Safety Guard	5711	Anti-Reverse Cam Spring
0642	Side Cover Screw (small)	5680	Line Safety Guard Spacer (B)	5712	"O" Ring (large)
0690	Drive Gear Washer	5681	Angle Controller	5713	Worm Bushing (front)
0998	Bail Spring Cover Screw (long)	5682	Bail Arm Nut	5714	Idle Gear
1506	Clutch Cover Screw	5683	Spring Guide (A) Support	5715	Worm Shaft
1868	Handle Lock Washer	5684	Bail Spring Guide (A)	5716	Worm Bushing (rear)
2298	Spacer	5685	Spacer	5717	Ball Bearing
2409	Worm Shaft Spacer	5686	Bail Arm Shaft	5718	Side Cover Flange
3204	Ball Bearing	5687	Bail Arm	5719	Drive Gear
3232	Rotor Nut	5688	Line Roller Screw	5720	Side Cover
3273	Handle Screw Lock	5689	Bail Spring Cover	5721	Handle Screw Cap
3304	Bearing Spacer	5690	Multi-Purpose Screw	5722	Oscillating Pawl Cover Screw
3306	Line Roller Bearing	5691	Bail Spring	5723	Oscillating Pawl Cover
3339	Spool Support (B)	5692	Bail Spring Guide (B)	5724	Oscillating Slider Bushing
3340	Line Safety Guard Spacer (A)	5693	"U" Lock	5725	Oscillating Pawl
3342	Bearing Retainer Screw	5694	Main Shaft	5726	Oscillating Slider
3665	Slider Retainer Screw (A)	5695	Bail Hold Support Guard	5727	Slider Retainer Screw (B)
4627	Side Cover Screw (large)	5696	Guard Screw	5728	Rear Protector Screw
4631	Spacer	5697	Bail Hold Support Spacer	5729	Rear Protector
4638	Line Roller Washer	5698	Bail Hold Support Shaft	5730	Worm Shaft Retainer Washer
4718	Lever Spring Guide (A)	5699	Bail Assembly	5731	Oscillating Guide (long)
4724	Ball Bearing	5700	Rotor	5732	Oscillating Guide (short)
4743	Line Roller Bushing	5701	Lever Spring Guide (B)	5733	Anti-Reverse Lever
4744	Roller Bearing Seal	5702	Lever Spring	5734	Body
5040	Roller Clutch Screw	5703	Bail Trip Lever	5735	Handle Assembly
5042	Anti-Reverse Cam Ring	5704	Trip Lever Spacer	6802	Bail Arm Bushing
5354	Line Roller	5705	Roller Clutch Ring		
5674	Drag Knob	5706	Roller Clutch Assembly		
5675	Spool Assembly (TYPE 5)	5707	Bearing Washer		
5676	Spool Washer	5708	Ball Bearing	5736	Spool Assembly (TYPE 3)