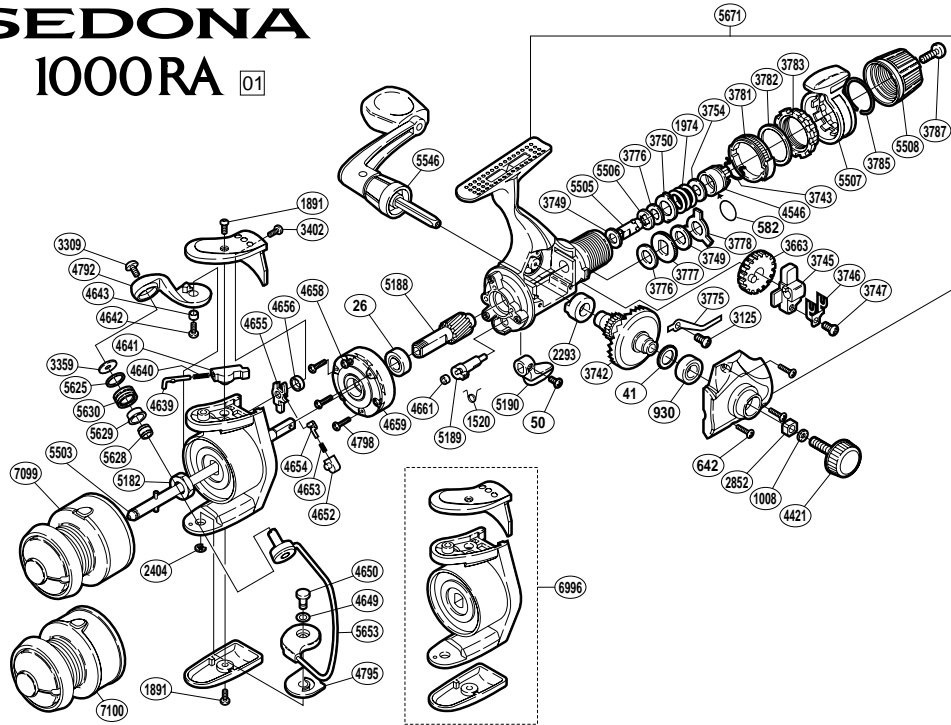


# SEDONA 1000RA 01



RD No.	PARTS NAMES	RD No.	PARTS NAMES	RD No.	PARTS NAMES
0026	Ball Bearing	3754	Drag Spring Washer	4659	Roller Clutch Assembly
0041	Drive Gear Washer	3775	Drag Click	4661	Anti-Reverse Cam Ring
0050	Anti-Reverse Lever Screw	3776	Drag Washer "C" (cloth)	4792	Bail Arm
0582	"O" Ring	3777	Click Gear	4795	Bail Hold Support Spacer
0642	Side Cover Screw	3778	Eared Washer "B"	4798	Roller Clutch Screw
0930	Ball Bearing	3781	Lever Click Gear	5182	Rotor Nut
1008	Handle Lock Washer	3782	Fightin' Pressure Screw Washer	5188	Pinion Gear
1520	Anti-Reverse Cam Spring	3783	Fightin' Pressure Screw	5189	Anti-Reverse Cam
1891	Multi-Purpose Screw	3785	Lever Hold Spring	5190	Anti-Reverse Lever
1974	Drag Coil Spring	3787	Drag Programmer Screw	5503	Main Shaft
2293	Drive Gear Bushing	4421	Handle Screw Cap	5505	Drag Shaft (A)
2404	"E" Lock	4546	Pressure Screw	5506	Drag Shaft (B)
2852	Handle Screw Lock	4639	Bail Spring Guide (A)	5507	Fightin' Drag Lever
3125	Drag Click Screw	4640	Bail Spring	5508	Drag Programmer
3309	Line Roller Screw	4641	Bail Spring Guide (B)	5546	Handle Assembly
3359	Line Roller Washer	4642	Bail Arm Screw	5625	Line Roller Spacer
3402	Bail Spring Cover Screw (small)	4643	Bail Arm Bushing	5628	Line Roller Collar
3663	Oscillating Gear	4649	Spacer	5629	Line Roller Bushing
3742	Drive Gear	4650	Bail Hold Support Shaft	5630	Line Roller
3743	Hold Click Spring	4652	Lever Spring Guide (B)	5653	Bail Assembly
3745	Oscillating Slider	4653	Lever Spring	5671	Body Assembly
3746	Oscillating Slider Retainer	4654	Lever Spring Guide (A)	6996	Rotor Assembly
3747	Slider Retainer Screw	4655	Bail Trip Lever	7099	Spool Assembly (aluminum)
3749	Drag Washer "C" (white)	4656	Trip Lever Spacer	7100	Spool Assembly (graphite)
3750	Eared Washer "B"	4658	Clutch Cover Screw		