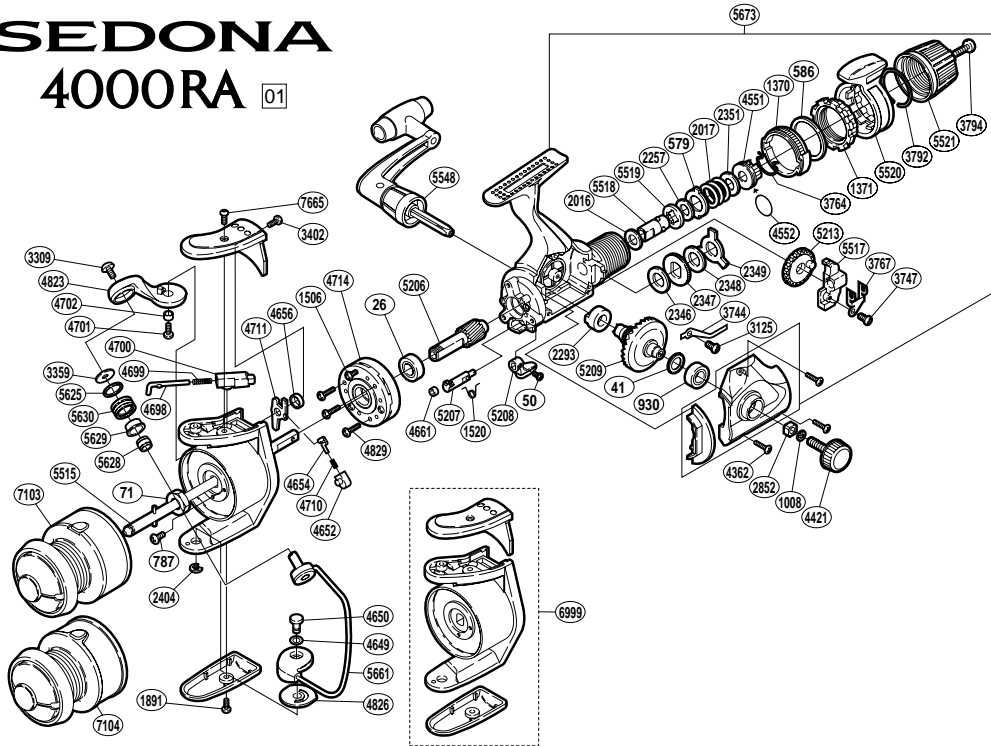


# SEDONA 4000RA 01



RD No.	PARTS NAMES	RD No.	PARTS NAMES	RD No.	PARTS NAMES
0026	Ball Bearing	3309	Line Roller Screw	4714	Roller Clutch Assembly
0041	Drive Gear Washer	3359	Line Roller Washer	4823	Bail Arm
0050	Anti-Reverse Lever Screw	3402	Bail Spring Cover Screw (small)	4826	Bail Hold Support Spacer
0071	Rotor Nut	3744	Drag Click	4829	Roller Clutch Screw
0579	Eared Washer "B"	3747	Slider Retainer Screw	5206	Pinion Gear
0586	Fightin' Pressure Screw Washer	3764	Hold Click Spring	5207	Anti-Reverse Cam
0787	Nut Lock Screw	3767	Oscillating Slider Retainer	5208	Anti-Reverse Lever
0930	Ball Bearing	3792	Lever Hold Spring	5209	Drive Gear
1008	Handle Lock Washer	3794	Drag Programmer Screw	5213	Oscillating Gear
1370	Lever Click Gear	4362	Side Cover Screw	5515	Main Shaft
1371	Fightin' Pressure Screw	4421	Handle Screw Cap	5517	Oscillating Slider
1506	Clutch Cover Screw	4551	Pressure Screw	5518	Drag Shaft (A)
1520	Anti-Reverse Cam Spring	4552	"O" Ring	5519	Drag Shaft (B)
1891	Bail Hold Support Guard Screw	4649	Spacer	5520	Fightin' Drag Lever
2016	Drag Washer "H" (cloth)	4650	Bail Hold Support Shaft	5521	Drag Programmer
2017	Drag Coil Spring	4652	Lever Spring Guide (B)	5548	Handle Assembly
2257	Drag Washer "H" (blue)	4654	Lever Spring Guide (A)	5625	Line Roller Spacer
2293	Drive Gear Bushing	4656	Trip Lever Spacer	5628	Line Roller Collar
2346	Drag Washer "C" (cloth)	4661	Anti-Reverse Cam Ring	5629	Line Roller Bushing
2347	Click Gear	4698	Bail Spring Guide (A)	5630	Line Roller
2348	Drag Washer "C" (blue)	4699	Bail Spring	5661	Bail Assembly
2349	Eared Washer "B"	4700	Bail Spring Guide (B)	5673	Body Assembly
2351	Drag Spring Washer	4701	Bail Arm Screw	6999	Rotor Assembly
2404	"E" Lock	4702	Bail Arm Bushing	7103	Spool Assembly (aluminum)
2852	Handle Screw Lock	4710	Lever Spring	7104	Spool Assembly (graphite)
3125	Drag Click Screw	4711	Bail Trip Lever	7665	Bail Spring Cover Screw (large)