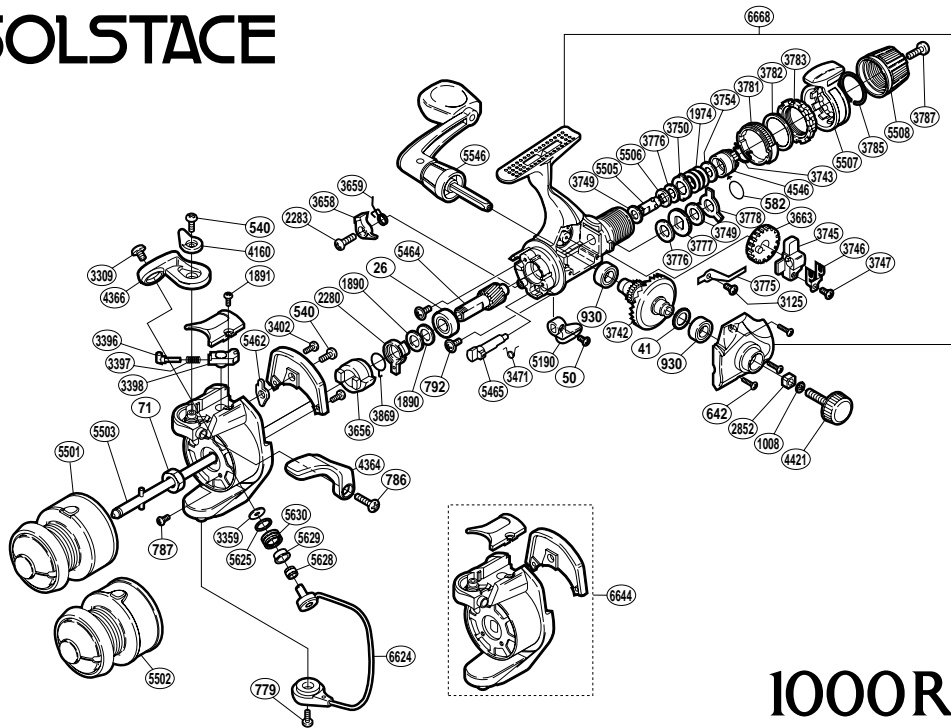


SOLSTACE



1000RE 00

RD No.	PARTS NAMES	RD No.	PARTS NAMES	RD No.	PARTS NAMES
0026	Ball Bearing	3402	Cover Screw	4364	Quick-Fire II Trigger
0041	Drive Gear Washer	3471	Anti-Reverse Cam Spring	4366	Bail Arm
0050	Anti-Reverse Lever Screw	3656	Anti-Reverse Ratchet	4421	Handle Screw Cap
0071	Rotor Nut	3658	Anti-Reverse Pawl	4546	Pressure Screw
0540	Multi-Purpose Screw	3659	Anti-Reverse Pawl Spring	5190	Anti-Reverse Lever
0582	"O" Ring	3663	Oscillating Gear	5462	Bail Trip Lever
0642	Side Cover Screw	3742	Drive Gear	5464	Pinion Gear
0779	Bail Hold Support Screw	3743	Hold Click Spring	5465	Anti-Reverse Cam
0786	Trigger Screw	3745	Oscillating Slider	5501	Spool Assembly (aluminum)
0787	Nut Lock Screw	3746	Oscillating Slider Retainer	5502	Spool Assembly (graphite)
0792	Bearing Retainer Screw	3747	Slider Retainer Screw	5503	Main Shaft
0930	Ball Bearing	3749	Drag Washer "C" (white)	5505	Drag Shaft (A)
1008	Handle Lock Washer	3750	Eared Washer "B"	5506	Drag Shaft (B)
1890	Bushing Washer	3754	Drag Spring Washer	5507	Fightin' Drag Lever
1891	Bail Spring Cover Screw	3775	Drag Click	5508	Drag Programmer
1974	Drag Coil Spring	3776	Drag Washer "C" (cloth)	5546	Handle Assembly
2280	Anti-Reverse Lock Out	3777	Click Gear	5625	Line Roller Spacer
2283	Anti-Reverse Pawl Screw	3778	Eared Washer "Bf"	5628	Line Roller Collar
2852	Handle Screw Lock	3781	Lever Click Gear	5629	Line Roller Bushing
3125	Drag Click Screw	3782	Fightin' Pressure Screw Washer	5630	Line Roller
3309	Line Roller Screw	3783	Fightin' Pressure Screw	6624	Bail Assembly
3359	Line Roller Washer	3785	Lever Hold Spring	6644	Rotor Assembly
3396	Bail Spring Guide (A)	3787	Drag Programmer Screw	6668	Body Assembly
3397	Bail Spring	3869	Anti-Reverse Lock Out Spring		
3398	Bail Spring Guide (B)	4160	Trigger Cam		

(110714)