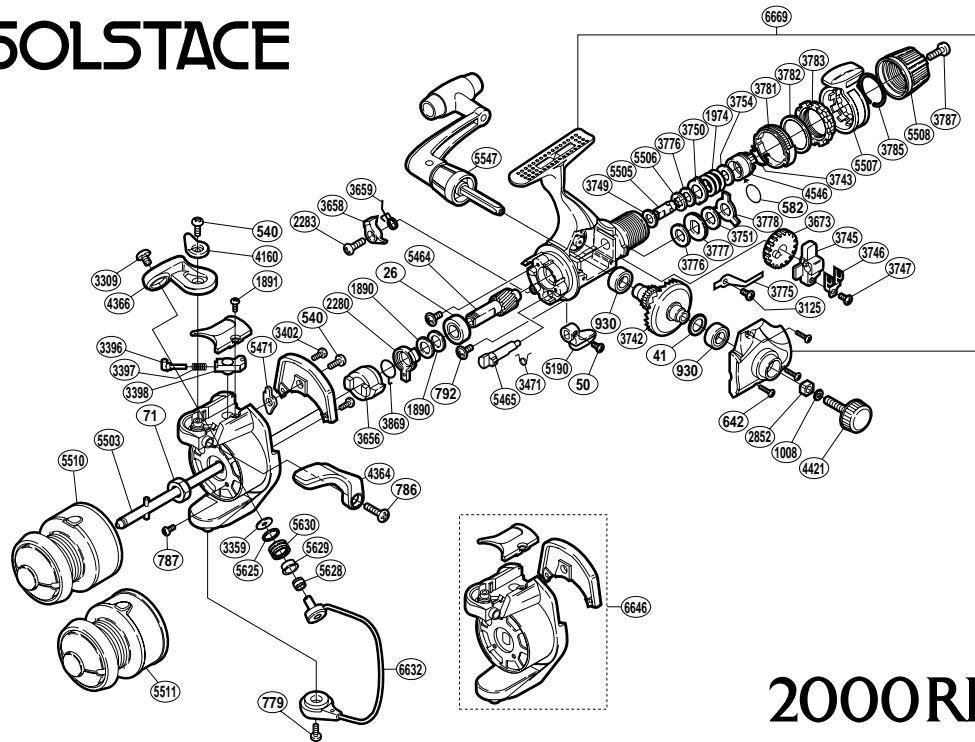


# SOLSTACE



## 2000RE 00

RD No.	PARTS NAMES	RD No.	PARTS NAMES	RD No.	PARTS NAMES
0026	Ball Bearing	3402	Cover Screw	4160	Trigger Cam
0041	Drive Gear Washer	3471	Anti-Reverse Cam Spring	4364	Quick-Fire II Trigger
0050	Anti-Reverse Lever Screw	3656	Anti-Reverse Ratchet	4366	Bail Arm
0071	Rotor Nut	3658	Anti-Reverse Pawl	4421	Handle Screw Cap
0540	Multi-Purpose Screw	3659	Anti-Reverse Pawl Spring	4546	Pressure Screw
0582	"O" Ring	3673	Oscillating Gear	5190	Anti-Reverse Lever
0642	Side Cover Screw	3742	Drive Gear	5464	Pinion Gear
0779	Bail Hold Support Screw	3743	Hold Click Spring	5465	Anti-Reverse Cam
0786	Trigger Screw	3745	Oscillating Slider	5471	Bail Trip Lever
0787	Nut Lock Screw	3746	Oscillating Slider Retainer	5503	Main Shaft
0792	Bearing Retainer Screw	3747	Slider Retainer Screw	5505	Drag Shaft (A)
0930	Ball Bearing	3749	Drag Washer "C" (white)	5506	Drag Shaft (B)
1008	Handle Lock Washer	3750	Eared Washer "B"	5507	Fightin' Drag Lever
1890	Bushing Washer	3751	Drag Washer "C" (blue)	5508	Drag Programmer
1891	Bail Spring Cover Screw	3754	Drag Spring Washer	5510	Spool Assembly (aluminum)
1974	Drag Coil Spring	3775	Drag Click	5511	Spool Assembly (graphite)
2280	Anti-Reverse Lock Out	3776	Drag Washer "C" (cloth)	5547	Handle Assembly
2283	Anti-Reverse Pawl Screw	3777	Click Gear	5625	Line Roller Spacer
2852	Handle Screw Lock	3778	Eared Washer "Bf"	5628	Line Roller Collar
3125	Drag Click Screw	3781	Lever Click Gear	5629	Line Roller Bushing
3309	Line Roller Screw	3782	Fightin' Pressure Screw Washer	5630	Line Roller
3359	Line Roller Washer	3783	Fightin' Pressure Screw	6632	Bail Assembly
3396	Bail Spring Guide (A)	3785	Lever Hold Spring	6646	Rotor Assembly
3397	Bail Spring	3787	Drag Programmer Screw	6669	Body Assembly
3398	Bail Spring Guide (B)	3869	Anti-Reverse Lock Out Spring		

(110714)