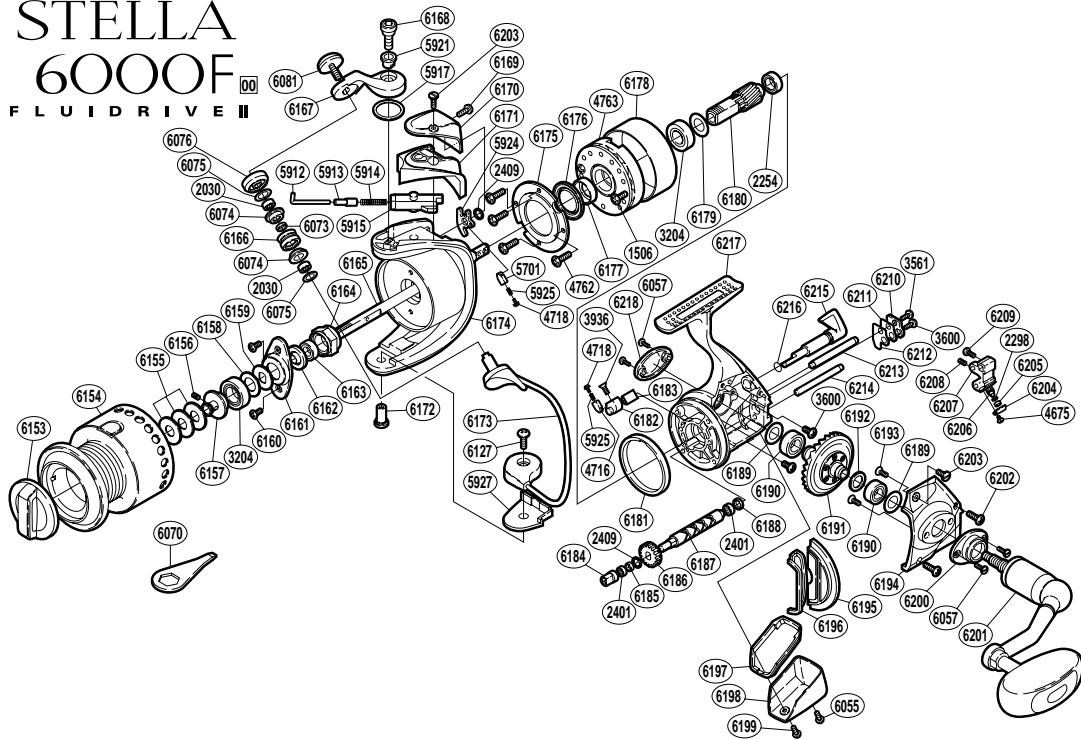


STELLA

6000F

FLUIDRIVE II



RD No.	PARTS NAMES	RD No.	PARTS NAMES	RD No.	PARTS NAMES
1506	Clutch Cover Screw	6153	Drag Knob	6187	Worm Shaft
2030	Ball Bearing	6154	Spool Assembly	6188	Worm Shaft Ring
2254	Ball Bearing	6155	Spool Washer	6189	Bearing Waterproof (C)
2298	Spacer	6156	Set Screw	6190	Ball Bearing
2401	Ball Bearing	6157	Bearing Bushing	6191	Drive Gear
2409	Worm Shaft Spacer	6158	Bearing Waterproof (A)	6192	Drive Gear Washer
3204	Ball Bearing	6159	Spool Support	6193	Bearing Screw
3561	Worm Shaft Retainer Screw	6160	Nut Lock Screw	6194	Side Cover
3600	Multi-Purpose Screw	6161	Rotor Nut Lock Plate	6195	Side Cover Flange
3936	Anti-Reverse Cam Screw	6162	Bearing Waterproof (B)	6196	Flange Waterproof
4675	Oscillating Pawl Cover Screw	6163	Ball Bearing	6197	Rear Shield
4716	Lever Spring Guide (B)	6164	Rotor Nut	6198	Rear Protector
4718	Lever Spring Guide (A)	6165	Main Shaft	6199	Rear Protector Screw (B)
4762	Roller Clutch Screw	6166	Line Roller	6200	Handle Screw Cap (A)
4763	Roller Clutch Assembly	6167	Bail Arm	6201	Handle Assembly
5701	Lever Spring Guide (B)	6168	Bail Arm Screw	6202	Side Cover Screw (long)
5912	Bail Spring Guide (A)	6169	Protector Screw (B)	6203	Protector Screw (A)
5913	Spring Guide (A) Support	6170	Rotor Protector	6204	Oscillating Pawl Cover
5914	Bail Spring	6171	Bail Spring Cover	6205	Oscillating Slider Bushing
5915	Bail Spring Guide (B)	6172	Bail Hold Support Shaft	6206	Oscillating Pawl
5917	Bail Arm Washer	6173	Bail Assembly	6207	Oscillating Slider
5921	Bail Arm Screw Collar	6174	Rotor	6208	Set Screw
5924	Bail Trip Lever	6175	Waterproof Cover	6209	Slider Retainer Screw
5925	Bail Trip Lever Spring	6176	Roller Clutch Waterproof	6210	Worm Shaft Retainer Spacer
5927	Bail Hold Support Spacer	6177	Rotor Ring	6211	Worm Shaft Retainer
6055	Rear Protector Screw (A)	6178	Roller Clutch Ring	6212	Worm Shaft Retainer Washer
6057	Cap Screw	6179	Bearing Washer	6213	Oscillating Guide (A)
6070	Wrench (accessory)	6180	Pinion Gear	6214	Oscillating Guide (B)
6073	Bearing Spacer	6181	Friction Ring	6215	Anti-Reverse Lever
6074	Line Roller Bushing	6182	Anti-Reverse Cam	6216	"O" Ring
6075	Roller Bearing Seal	6183	Anti-Reverse Waterproof	6217	Body
6076	Line Roller Washer	6184	Worm Bushing	6218	Handle Screw Cap (B)
6081	Line Roller Screw	6185	Idle Gear Spacer		
6127	Bail Hold Support Screw	6186	Idle Gear		