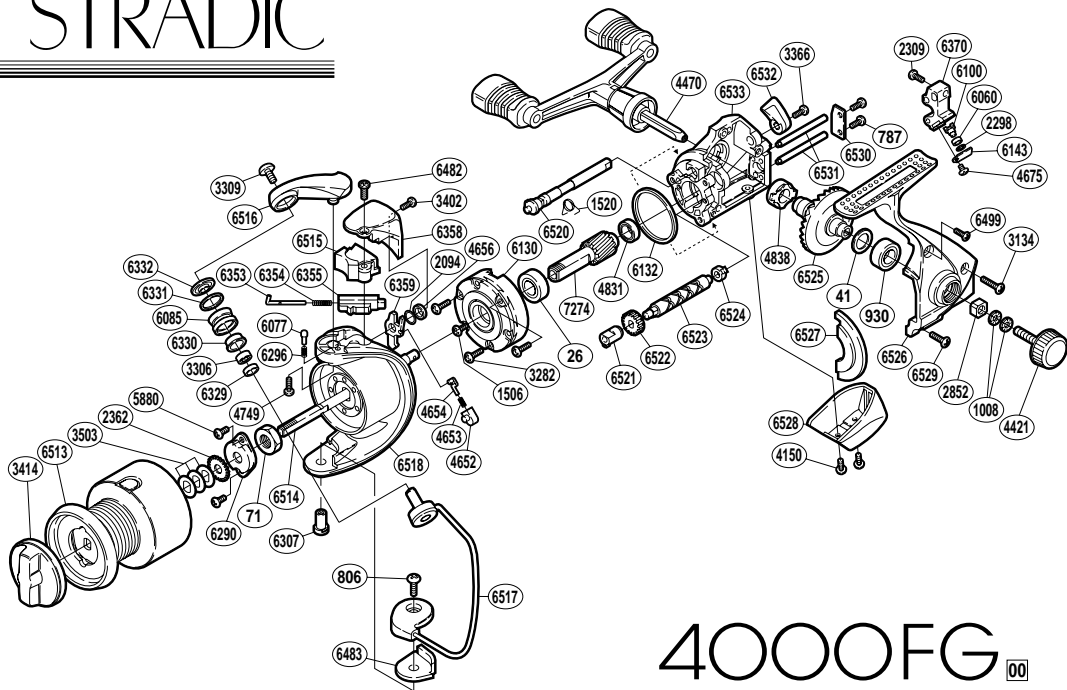


# STRADIC



## 4000FG 00

RD No.	PARTS NAMES	RD No.	PARTS NAMES	RD No.	PARTS NAMES
0026	Ball Bearing	4653	Lever Spring	6359	Bail Trip Lever
0041	Drive Gear Washer	4654	Lever Spring Guide (A)	6370	Oscillating Slider
0071	Rotor Nut	4656	Trip Lever Spacer	6482	Protector Screw (large)
0787	Worm Shaft Retainer Screw	4675	Oscillating Pawl Cover Screw	6483	Bail Hold Support Spacer
0806	Bail Hold Support Screw	4749	Bail Arm Screw	6499	Side Cover Screw (small)
0930	Ball Bearing	4831	Ball Bearing	6513	Spool Assembly
1008	Handle Lock Washer	4838	Drive Gear Bushing	6514	Main Shaft
1506	Clutch Cover Screw	5880	Nut Lock Screw	6515	Bail Spring Cover
1520	Anti-Reverse Cam Spring	6060	Oscillating Slider Bushing	6516	Bail Arm
2094	Spacer	6077	Click Pin	6517	Bail Assembly
2298	Spacer	6085	Line Roller	6518	Rotor
2309	Slider Retainer Screw	6100	Oscillating Pawl	6520	Anti-Reverse Cam
2362	Spool Support	6130	Roller Clutch Assembly	6521	Worm Bushing (front)
2852	Handle Screw Lock	6132	Friction Ring	6522	Idle Gear
3134	Side Cover Screw (long)	6143	Oscillating Pawl Cover	6523	Worm Shaft
3282	Roller Clutch Screw	6290	Rotor Nut Lock Plate	6524	Worm Bushing (rear)
3306	Ball Bearing	6296	Click Spring	6525	Drive Gear
3309	Line Roller Screw	6307	Bail Hold Support Shaft	6526	Side Cover
3366	Anti-Reverse Lever Screw	6329	Bearing Spacer	6527	Side Cover Flange
3402	Protector Screw (small)	6330	Line Roller Bushing	6528	Rear Protector
3414	Drag Knob	6331	Line Roller Spacer	6529	Side Cover Screw (medium)
3503	Spool Washer	6332	Line Roller Washer	6530	Worm Shaft Retainer
4150	Rear Protector Screw	6353	Bail Spring Guide (A)	6531	Oscillating Guide
4421	Handle Screw Cap	6354	Bail Spring	6532	Anti-Reverse Lever
4470	Double Paddle Handle Assembly	6355	Bail Spring Guide (B)	6533	Body
4652	Lever Spring Guide (B)	6358	Rotor Protector	7274	Pinion Gear