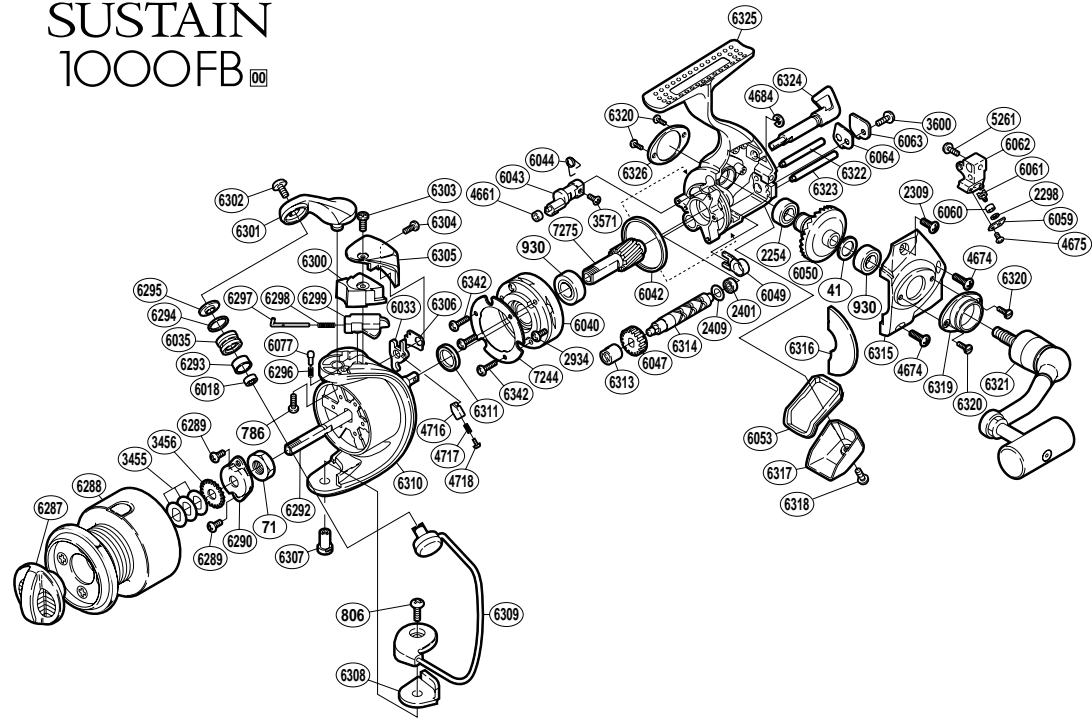


# SUSTAIN 1000FB



RD No.	PARTS NAMES	RD No.	PARTS NAMES	RD No.	PARTS NAMES
0041	Drive Gear Washer	6043	Anti-Reverse Cam	6303	Protector Screw (A)
0071	Rotor Nut	6044	Anti-Reverse Cam Spring	6304	Protector Screw (B)
0786	Bail Arm Screw	6047	Idle Gear	6305	Rotor Protector
0806	Bail Hold Support Screw	6049	Bushing	6306	Trip Lever Spacer
0930	Ball Bearing	6050	Drive Gear	6307	Bail Hold Support Shaft
2254	Ball Bearing	6053	Rear Shield	6308	Bail Hold Support Spacer
2298	Spacer	6059	Oscillating Pawl Cover	6309	Bail Assembly
2309	Side Cover Screw (short)	6060	Oscillating Slider Bushing	6310	Rotor
2401	Ball Bearing	6061	Oscillating Pawl	6311	Rotor Spacer
2409	Worm Shaft Spacer	6062	Oscillating Slider	6313	Worm Bushing
2934	Clutch Cover Screw	6063	Worm Shaft Retainer	6314	Worm Shaft
3455	Spool Washer	6064	Worm Shaft Retainer Washer	6315	Side Cover
3456	Spool Support	6077	Click Pin	6316	Side Cover Flange
3571	Anti-Reverse Cam Screw	6287	Drag Knob	6317	Rear Protector
3600	Worm Shaft Retainer Screw	6288	Spool Assembly	6318	Rear Protector Screw
4661	Anti-Reverse Cam Ring	6289	Nut Lock Screw	6319	Handle Screw Cap (A)
4674	Side Cover Screw	6290	Rotor Nut Lock Plate	6320	Cap Screw
4675	Oscillating Pawl Cover Screw	6292	Main Shaft	6321	Handle Assembly
4684	"E" Lock	6293	Line Roller Bushing	6322	Oscillating Guide (A)
4716	Lever Spring Guide (B)	6294	Line Roller Spacer	6323	Oscillating Guide (B)
4717	Lever Spring	6295	Line Roller Washer	6324	Anti-Reverse Lever
4718	Lever Spring Guide (A)	6296	Click Spring	6325	Body
5261	Slider Retainer Screw	6297	Bail Spring Guide (A)	6326	Handle Screw Cap (B)
6018	Ball Bearing	6298	Bail Spring	6342	Roller Clutch Screw
6033	Bail Trip Lever	6299	Bail Spring Guide (B)	7244	Roller Clutch Reinforce
6035	Line Roller	6300	Bail Spring Cover	7275	Pinion Gear
6040	Roller Clutch Assembly	6301	Bail Arm		
6042	Friction Ring	6302	Line Roller Screw		