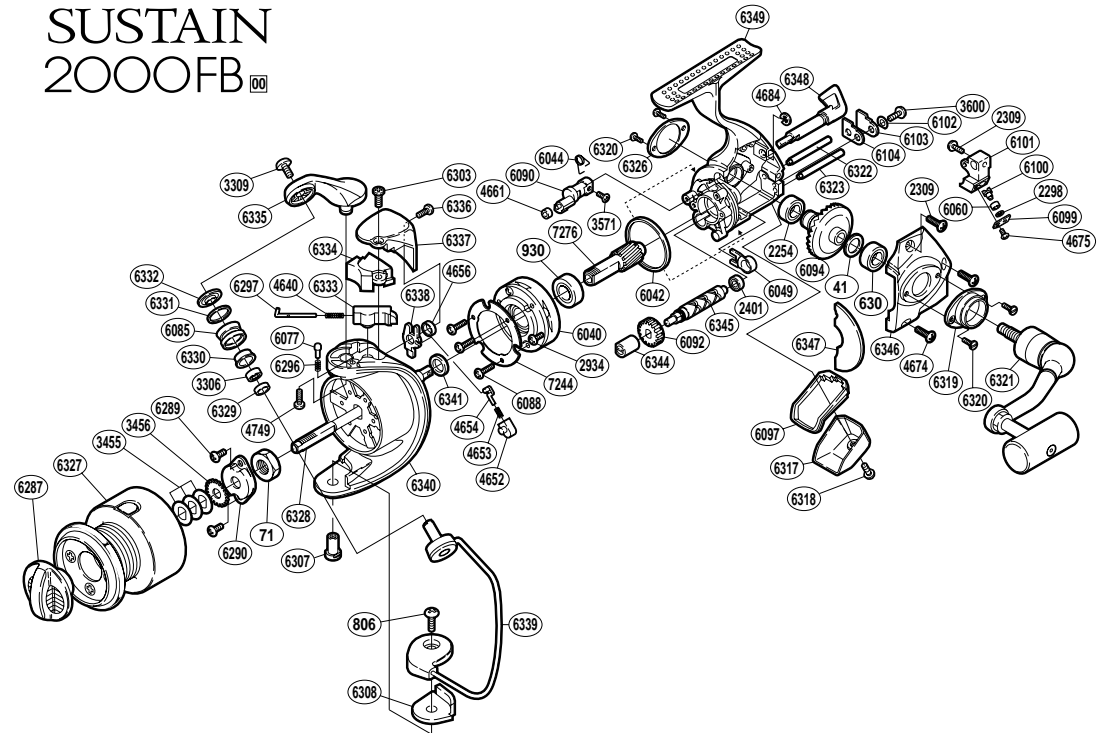


SUSTAIN 2000FB



RD No.	PARTS NAMES	RD No.	PARTS NAMES	RD No.	PARTS NAMES
0041	Drive Gear Washer	6049	Bushing	6322	Oscillating Guide (A)
0071	Rotor Nut	6060	Oscillating Slider Bushing	6323	Oscillating Guide (B)
0806	Bail Hold Support Screw	6077	Click Pin	6326	Handle Screw Cap (B)
0930	Ball Bearing	6085	Line Roller	6327	Spool Assembly
2254	Ball Bearing	6088	Roller Clutch Screw	6328	Main Shaft
2298	Spacer	6090	Anti-Reverse Cam	6329	Bearing Spacer
2309	Multi-Purpose Screw	6092	Idle Gear	6330	Line Roller Bushing
2401	Ball Bearing	6094	Drive Gear	6331	Line Roller Spacer
2934	Clutch Cover Screw	6097	Rear Shield	6332	Line Roller Washer
3306	Ball Bearing	6099	Oscillating Pawl Cover	6333	Bail Spring Guide (B)
3309	Line Roller Screw	6100	Oscillating Pawl	6334	Bail Spring Cover
3455	Spool Washer	6101	Oscillating Slider	6335	Bail Arm
3456	Spool Support	6102	Worm Shaft Retainer Spacer	6336	Protector Screw (B)
3571	Anti-Reverse Cam Screw	6103	Worm Shaft Retainer	6337	Rotor Protector
3600	Worm Shaft Retainer Screw	6104	Worm Shaft Retainer Washer	6338	Bail Trip Lever
4640	Bail Spring	6287	Drag Knob	6339	Bail Assembly
4652	Lever Spring Guide (B)	6289	Nut Lock Screw	6340	Rotor
4653	Lever Spring	6290	Rotor Nut Lock Plate	6341	Rotor Spacer
4654	Lever Spring Guide (A)	6296	Click Spring	6344	Worm Bushing
4656	Trip Lever Spacer	6297	Bail Spring Guide (A)	6345	Worm Shaft
4661	Anti-Reverse Cam Ring	6303	Protector Screw (A)	6346	Side Cover
4674	Side Cover Screw	6307	Bail Hold Support Shaft	6347	Side Cover Flange
4675	Oscillating Pawl Cover Screw	6308	Bail Hold Support Spacer	6348	Anti-Reverse Lever
4684	"E" Lock	6317	Rear Protector	6349	Body
4749	Bail Arm Screw	6318	Rear Protector Screw	7244	Roller Clutch Reinforce
6040	Roller Clutch Assembly	6319	Handle Screw Cap (A)	7276	Pinion Gear
6042	Friction Ring	6320	Cap Screw		
6044	Anti-Reverse Cam Spring	6321	Handle Assembly		