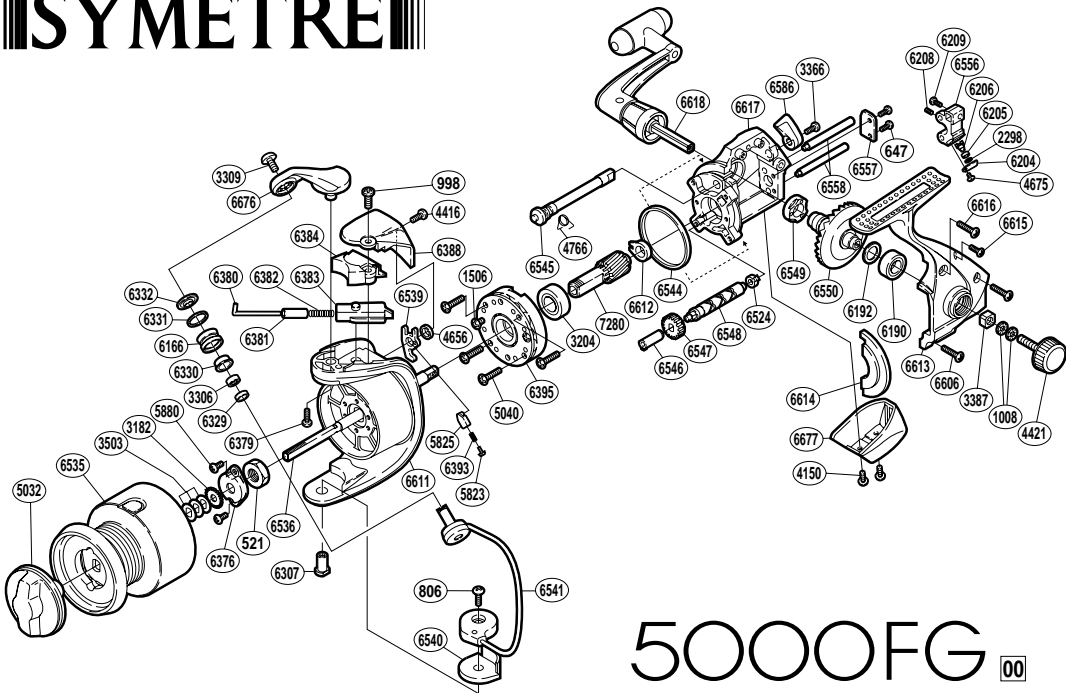


SYMETRE



5000FG 00

RD No.	PARTS NAMES	RD No.	PARTS NAMES	RD No.	PARTS NAMES
0521	Rotor Nut	6190	Ball Bearing	6540	Bail Hold Support Spacer
0647	Worm Shaft Retainer Screw	6192	Drive Gear Washer	6541	Bail Assembly
0806	Bail Hold Support Screw	6204	Oscillating Pawl Cover	6544	Friction Ring
0998	Protector Screw (long)	6205	Oscillating Slider Bushing	6545	Anti-Reverse Cam
1008	Handle Lock Washer	6206	Oscillating Pawl	6546	Worm Bushing (front)
1506	Clutch Cover Screw	6208	Set Screw	6547	Idle Gear
2298	Spacer	6209	Slider Retainer Screw	6548	Worm Shaft
3182	Spool Support	6307	Bail Hold Support Shaft	6549	Drive Gear Bushing
3204	Ball Bearing	6329	Bearing Spacer	6550	Drive Gear
3306	Ball Bearing	6330	Line Roller Bushing	6556	Oscillating Slider
3309	Line Roller Screw	6331	Line Roller Spacer	6557	Worm Shaft Retainer
3366	Anti-Reverse Lever Screw	6332	Line Roller Washer	6558	Oscillating Guide
3387	Handle Screw Lock	6376	Rotor Nut Lock Plate	6586	Anti-Reverse Lever
3503	Spool Washer	6379	Bail Arm Screw	6606	Side Cover Screw (long)
4150	Rear Protector Screw	6380	Bail Spring Guide (A)	6611	Rotor
4416	Protector Screw (short)	6381	Spring Guide (A) Support	6612	Bushing
4421	Handle Screw Cap	6382	Bail Spring	6613	Side Cover
4656	Trip Lever Spacer	6383	Bail Spring Guide (B)	6614	Side Cover Flange
4675	Oscillating Pawl Cover Screw	6384	Bail Spring Cover	6615	Side Cover Screw (small)
4766	Anti-Reverse Cam Spring	6388	Rotor Protector	6616	Side Cover Screw (medium)
5032	Drag Knob	6393	Lever Spring	6617	Body
5040	Roller Clutch Screw	6395	Roller Clutch Assembly	6618	Handle Assembly
5823	Lever Spring Guide (A)	6524	Worm Bushing (rear)	6676	Bail Arm
5825	Lever Spring Guide (B)	6535	Spool Assembly	6677	Rear Protector
5880	Nut Lock Screw	6536	Main Shaft	7280	Pinion Gear
6166	Line Roller	6539	Bail Trip Lever		