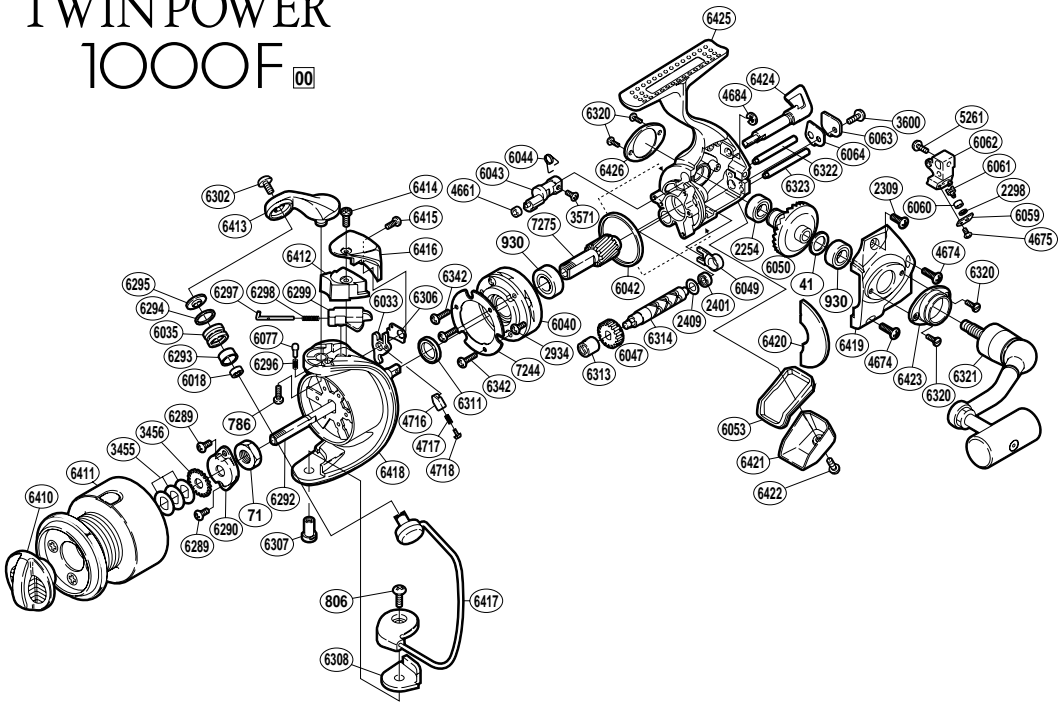


TWIN POWER 1000F



RD No.	PARTS NAMES	RD No.	PARTS NAMES	RD No.	PARTS NAMES
0041	Drive Gear Washer	6043	Anti-Reverse Cam	6313	Worm Bushing
0071	Rotor Nut	6044	Anti-Reverse Cam Spring	6314	Worm Shaft
0786	Bail Arm Screw	6047	Idle Gear	6320	Cap Screw
0806	Bail Hold Support Screw	6049	Bushing	6321	Handle Assembly
0930	Ball Bearing	6050	Drive Gear	6322	Oscillating Guide (A)
2254	Ball Bearing	6053	Rear Shield	6323	Oscillating Guide (B)
2298	Spacer	6059	Oscillating Pawl Cover	6342	Roller Clutch Screw
2309	Side Cover Screw (short)	6060	Oscillating Slider Bushing	6410	Drag Knob
2401	Ball Bearing	6061	Oscillating Pawl	6411	Spool Assembly
2409	Worm Shaft Spacer	6062	Oscillating Slider	6412	Bail Spring Cover
2934	Clutch Cover Screw	6063	Worm Shaft Retainer	6413	Bail Arm
3455	Spool Washer	6064	Worm Shaft Retainer Washer	6414	Protector Screw (A)
3456	Spool Support	6077	Click Pin	6415	Protector Screw (B)
3571	Anti-Reverse Cam Screw	6289	Nut Lock Screw	6416	Rotor Protector
3600	Worm Shaft Retainer Screw	6290	Rotor Nut Lock Plate	6417	Bail Assembly
4661	Anti-Reverse Cam Ring	6292	Main Shaft	6418	Rotor
4674	Side Cover Screw	6293	Line Roller Bushing	6419	Side Cover
4675	Oscillating Pawl Cover Screw	6294	Line Roller Spacer	6420	Side Cover Flange
4684	"E" Lock	6295	Line Roller Washer	6421	Rear Protector
4716	Lever Spring Guide (B)	6296	Click Spring	6422	Rear Protector Screw
4717	Lever Spring	6297	Bail Spring Guide (A)	6423	Handle Screw Cap (A)
4718	Lever Spring Guide (A)	6298	Bail Spring	6424	Anti-Reverse Lever
5261	Slider Retainer Screw	6299	Bail Spring Guide (B)	6425	Body
6018	Ball Bearing	6302	Line Roller Screw	6426	Handle Screw Cap (B)
6033	Bail Trip Lever	6306	Trip Lever Spacer	7244	Roller Clutch Reinforce
6035	Line Roller	6307	Bail Hold Support Shaft	7275	Pinion Gear
6040	Roller Clutch Assembly	6308	Bail Hold Support Spacer		
6042	Friction Ring	6311	Rotor Spacer		