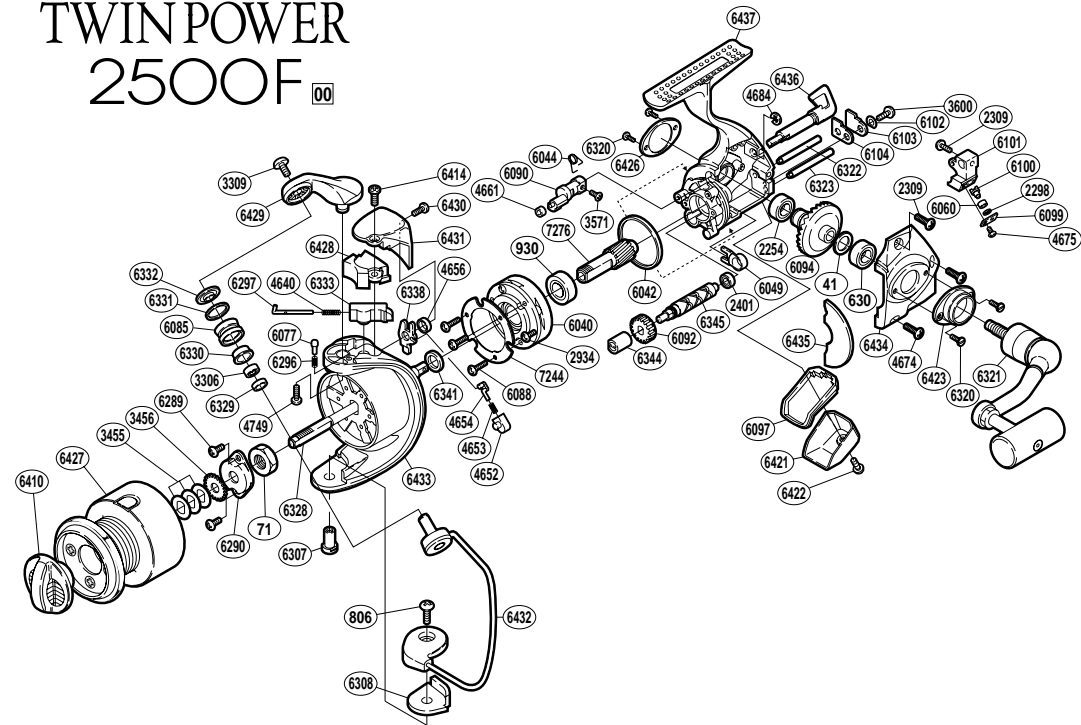


TWIN POWER 2500F



RD No.	PARTS NAMES	RD No.	PARTS NAMES	RD No.	PARTS NAMES
0041	Drive Gear Washer	6049	Bushing	6331	Line Roller Spacer
0071	Rotor Nut	6060	Oscillating Slider Bushing	6332	Line Roller Washer
0806	Bail Hold Support Screw	6077	Click Pin	6333	Bail Spring Guide (B)
0930	Ball Bearing	6085	Line Roller	6338	Bail Trip Lever
2254	Ball Bearing	6088	Roller Clutch Screw	6341	Rotor Spacer
2298	Spacer	6090	Anti-Reverse Cam	6344	Worm Bushing
2309	Multi-Purpose Screw	6092	Idle Gear	6345	Worm Shaft
2401	Ball Bearing	6094	Drive Gear	6410	Drag Knob
2934	Clutch Cover Screw	6097	Rear Shield	6414	Protector Screw (A)
3306	Ball Bearing	6099	Oscillating Pawl Cover	6421	Rear Protector
3309	Line Roller Screw	6099	Oscillating Pawl Cover	6422	Rear Protector Screw
3455	Spool Washer	6100	Oscillating Pawl	6423	Handle Screw Cap (A)
3456	Spool Support	6101	Oscillating Slider	6423	Handle Screw Cap (A)
3571	Anti-Reverse Cam Screw	6102	Worm Shaft Retainer Spacer	6426	Handle Screw Cap (B)
3600	Worm Shaft Retainer Screw	6103	Worm Shaft Retainer	6427	Spool Assembly
4640	Bail Spring	6104	Worm Shaft Retainer Washer	6428	Bail Spring Cover
4652	Lever Spring Guide (B)	6289	Nut Lock Screw	6429	Bail Arm
4653	Lever Spring	6290	Rotor Nut Lock Plate	6430	Protector Screw (B)
4654	Lever Spring Guide (A)	6296	Click Spring	6431	Rotor Protector
4656	Trip Lever Spacer	6297	Bail Spring Guide (A)	6432	Bail Assembly
4661	Anti-Reverse Cam Ring	6307	Bail Hold Support Shaft	6433	Rotor
4674	Side Cover Screw	6308	Bail Hold Support Spacer	6434	Side Cover
4675	Oscillating Pawl Cover Screw	6320	Cap Screw	6435	Side Cover Flange
4684	"E" Lock	6321	Handle Assembly	6436	Anti-Reverse Lever
4749	Bail Arm Screw	6322	Oscillating Guide (A)	6437	Body
6040	Roller Clutch Assembly	6323	Oscillating Guide (B)	7244	Roller Clutch Reinforce
6042	Friction Ring	6329	Bearing Spacer	7276	Pinion Gear
6044	Anti-Reverse Cam Spring	6330	Line Roller Bushing		