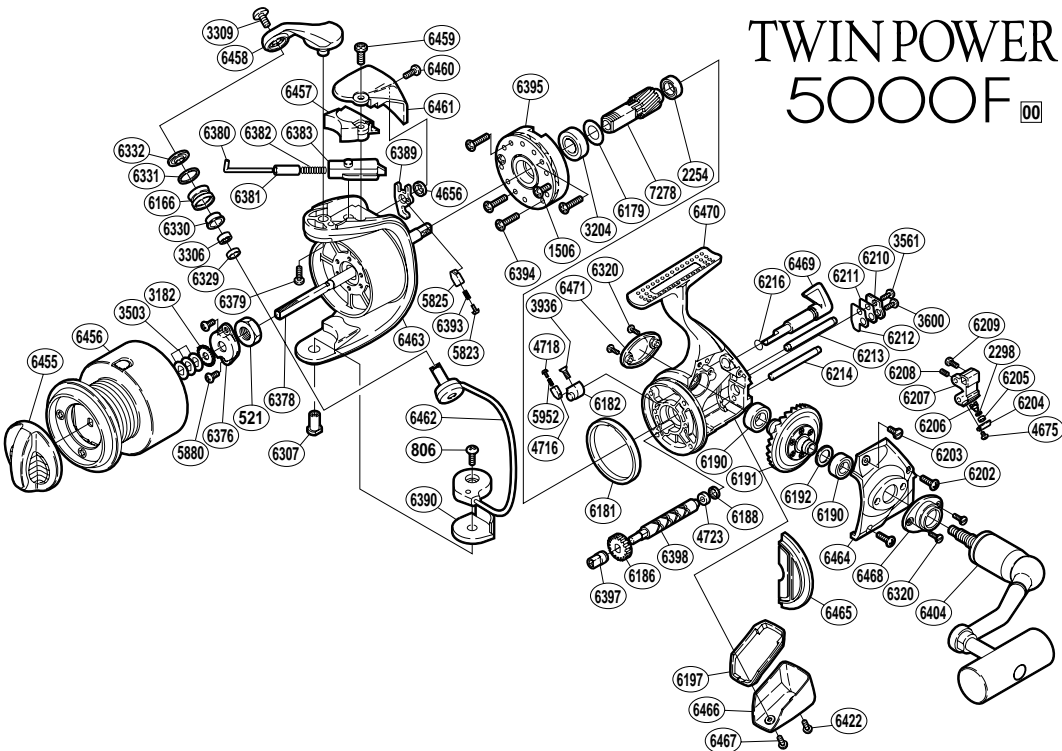


# TWIN POWER 5000F



| RD No. | PARTS NAMES                       | RD No. | PARTS NAMES                | RD No. | PARTS NAMES              |
|--------|-----------------------------------|--------|----------------------------|--------|--------------------------|
| 0521   | Rotor Nut                         | 6191   | Drive Gear                 | 6383   | Bail Spring Guide (B)    |
| 0806   | Bail Hold Support Screw           | 6192   | Drive Gear Washer          | 6389   | Bail Trip Lever          |
| 1506   | Clutch Cover Screw                | 6197   | Rear Shield                | 6390   | Bail Hold Support Spacer |
| 2254   | Ball Bearing                      | 6202   | Side Cover Screw (long)    | 6393   | Lever Spring             |
| 2298   | Spacer                            | 6203   | Side Cover Screw (short)   | 6394   | Roller Clutch Screw      |
| 3182   | Spool Support                     | 6204   | Oscillating Pawl Cover     | 6395   | Roller Clutch Assembly   |
| 3204   | Ball Bearing                      | 6205   | Oscillating Slider Bushing | 6397   | Worm Bushing (front)     |
| 3306   | Ball Bearing                      | 6206   | Oscillating Pawl           | 6398   | Worm Shaft               |
| 3309   | Line Roller Screw                 | 6207   | Oscillating Slider         | 6404   | Handle Assembly          |
| 3503   | Spool Washer                      | 6208   | Set Screw                  | 6422   | Rear Protector Screw (A) |
| 3561   | Worm Shaft Retainer Screw (small) | 6209   | Slider Retainer Screw      | 6455   | Drag Knob                |
| 3600   | Worm Shaft Retainer Screw (large) | 6210   | Worm Shaft Retainer Spacer | 6456   | Spool Assembly           |
| 3936   | Anti-Reverse Cam Screw            | 6211   | Worm Shaft Retainer        | 6457   | Bail Spring Cover        |
| 4656   | Trip Lever Spacer                 | 6212   | Worm Shaft Retainer Washer | 6458   | Bail Arm                 |
| 4675   | Oscillating Pawl Cover Screw      | 6213   | Oscillating Guide (A)      | 6459   | Protector Screw (A)      |
| 4716   | Lever Spring Guide (B)            | 6214   | Oscillating Guide (B)      | 6460   | Protector Screw (B)      |
| 4718   | Lever Spring Guide (A)            | 6216   | "O" Ring                   | 6461   | Rotor Protector          |
| 4723   | Worm Bushing Rear                 | 6307   | Bail Hold Support Shaft    | 6462   | Bail Assembly            |
| 5823   | Lever Spring Guide (A)            | 6320   | Cap Screw                  | 6463   | Rotor                    |
| 5825   | Lever Spring Guide (B)            | 6329   | Bearing Spacer             | 6464   | Side Cover               |
| 5880   | Nut Lock Screw                    | 6330   | Line Roller Bushing        | 6465   | Side Cover Flange        |
| 5925   | Bail Trip Lever Spring            | 6331   | Line Roller Spacer         | 6466   | Rear Protector           |
| 6166   | Line Roller                       | 6332   | Line Roller Washer         | 6467   | Rear Protector Screw (B) |
| 6179   | Bearing Washer                    | 6376   | Rotor Nut Lock Plate       | 6468   | Handle Screw Cap (A)     |
| 6181   | Friction Ring                     | 6378   | Main Shaft                 | 6469   | Anti-Reverse Lever       |
| 6182   | Anti-Reverse Cam                  | 6379   | Bail Arm Screw             | 6470   | Body                     |
| 6186   | Idle Gear                         | 6380   | Bail Spring Guide (A)      | 6471   | Handle Screw Cap (B)     |
| 6188   | Worm Shaft Ring                   | 6381   | Spring Guide (A) Support   | 7278   | Pinion Gear              |
| 6190   | Ball Bearing                      | 6382   | Bail Spring                |        |                          |